
EXECUTIVE SUMMARY REPORT

OSD – Forest Edge Elementary School

April 24th, 2020

What's New?

Forest Edge Elementary School has made astounding progress in the past couple weeks! The second floor bathrooms have begun tile, toilet, and sink additions. The elevator is nearly complete!

On the first floor, carpeting has been laid in the north facing classrooms. Cabinets are being installed starting in the art room, and will continue clockwise around the building. Drywall has finished in the cafeteria, and the west facing wall and ceiling in the cafeteria have been painted. Doors, hardware, and interior windows are continuing to make progress throughout the building. Sage glass and other exterior windows have really brightened up the interior. The zinc paneling is continuing installation around the building, changing the blue walls to black.

The geothermal contractor is working on tying the interior and exterior systems together, and the solar panel installation is ongoing for the next few months. MG&E will be onsite Monday, 4/27 to give the building permanent power!

The Past Weeks

- Carpeting in 1st floor classrooms
- Elevator installation
- Exterior Zinc paneling

Coming Up in the Weeks Ahead

- Carpet and flooring on 1st floor
- Cabinets in 1st floor classrooms
- Bathroom tile installation
- Locker installation



Courtyard with Zinc panels, Sage glass, and curtain wall



Second Floor Discovery Center



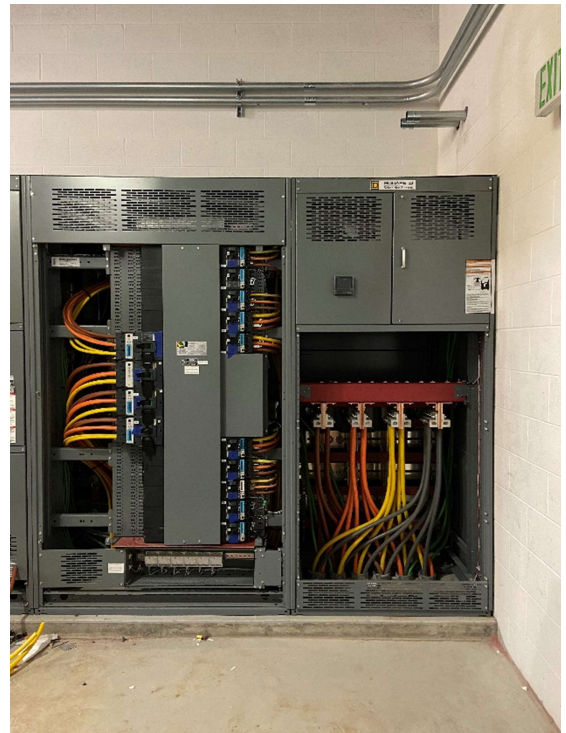
Did you know? The annual Earth Day celebration was this past Wednesday on April 22nd. Earth Day was created 50 years ago by Wisconsin's own Governor, Gaylord Nelson. This sparked a national environmental legislation which grew to international recognition of conservation. The theme of Earth Day 2020 is "Climate Action."



Curtain Wall Installed and Ceiling Painted in Cafeteria Area



First Floor Elevator



Switch Gear Installed